



Proposed Development of New National Wildlife Health Center

JULY 2023



Welcome

- ☐ Introductions
- ☐ Brief History of National Wildlife Health Center
- ☐ Proposed National Wildlife Health Center
- ☐ Meeting Purpose
- ☐ Goals and Objectives
- ☐ Project Description
- ☐ Environmental Impact Statement
- ☐ Project Status
- ☐ Next Steps/Open Discussion

Introductions



- Jordan D. Sizemore, REM, Environmental Protection Specialist
- LeAnn White, Deputy Director, NWHC
- Joshua Valder, Tribal Liaison
- Martin T. Smith, Chief, Project Management Branch
- Michael D. Bonds, Safety & Environmental Program Coordinator
- David Ozman, Communications Chief
- Allie Weill, Communications Assistant



- Bob Nardi, Project Manager
- Jessica Forbes, Deputy Project Manager
- Brittani Kaim, Director, Communications & Public Involvement
- Michal Helman, Public Engagement
- Kate Umlauf, Historian

USGS United States Geological Survey

- ❑ Established by Congress on March 3, 1879, to classify nation's public lands and examine geological structure and natural resources of the national domain.
- ❑ Sole scientific agency for Department of the Interior and Nation's largest water, earth, and biological science and civilian mapping organization.
- ❑ Focuses on significant societal issues and contributes to well-being of Nation and world through five science mission areas: Core Science Systems, Natural Hazards, Ecosystems, Energy and Minerals, and Water Resources.





Brief History of National Wildlife Health Center

<https://www.usgs.gov/centers/nwhc/history-nwhc>

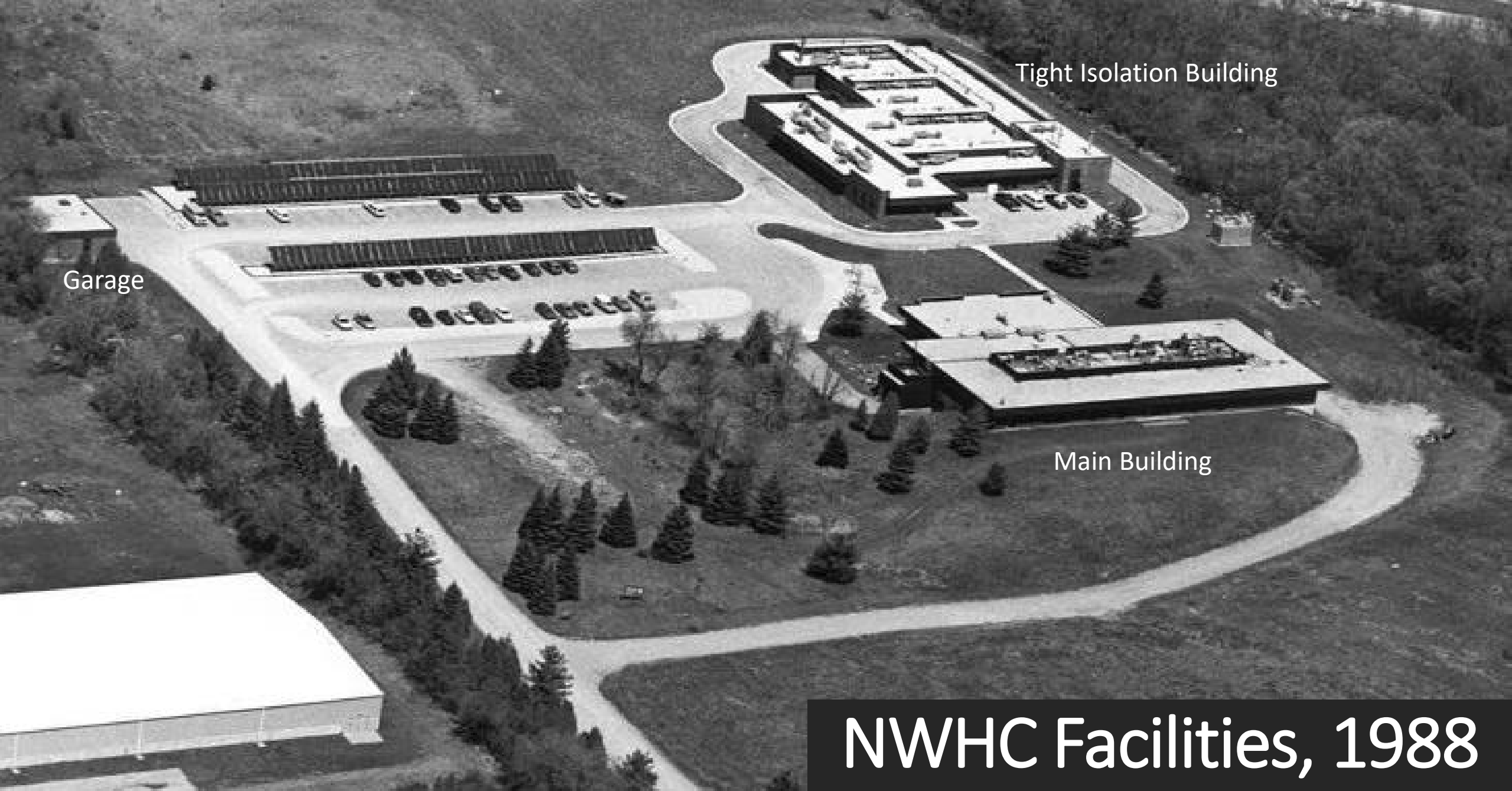




UW-Madison Stock Pavilion, 1975



Ansul Chemical Company, 1969-1974



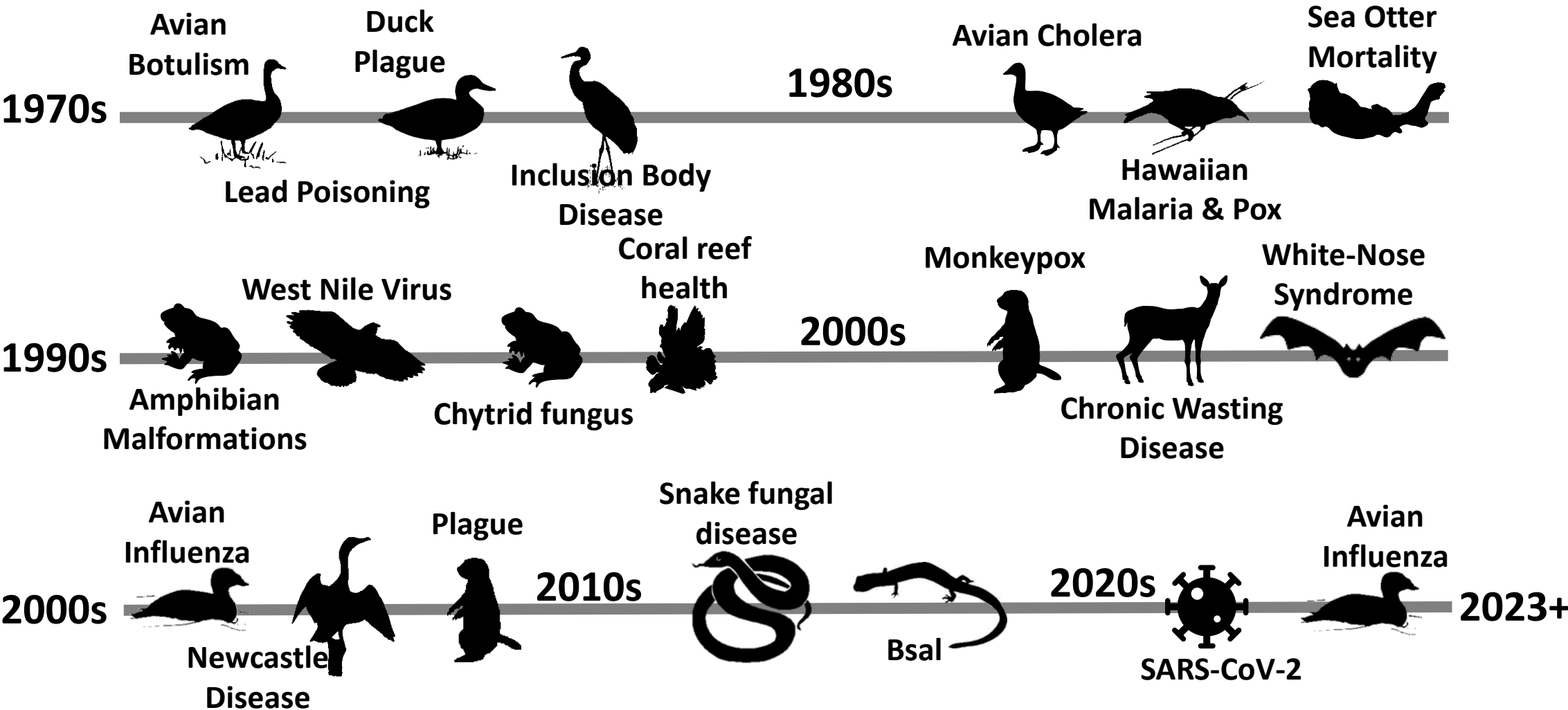
Garage

Tight Isolation Building

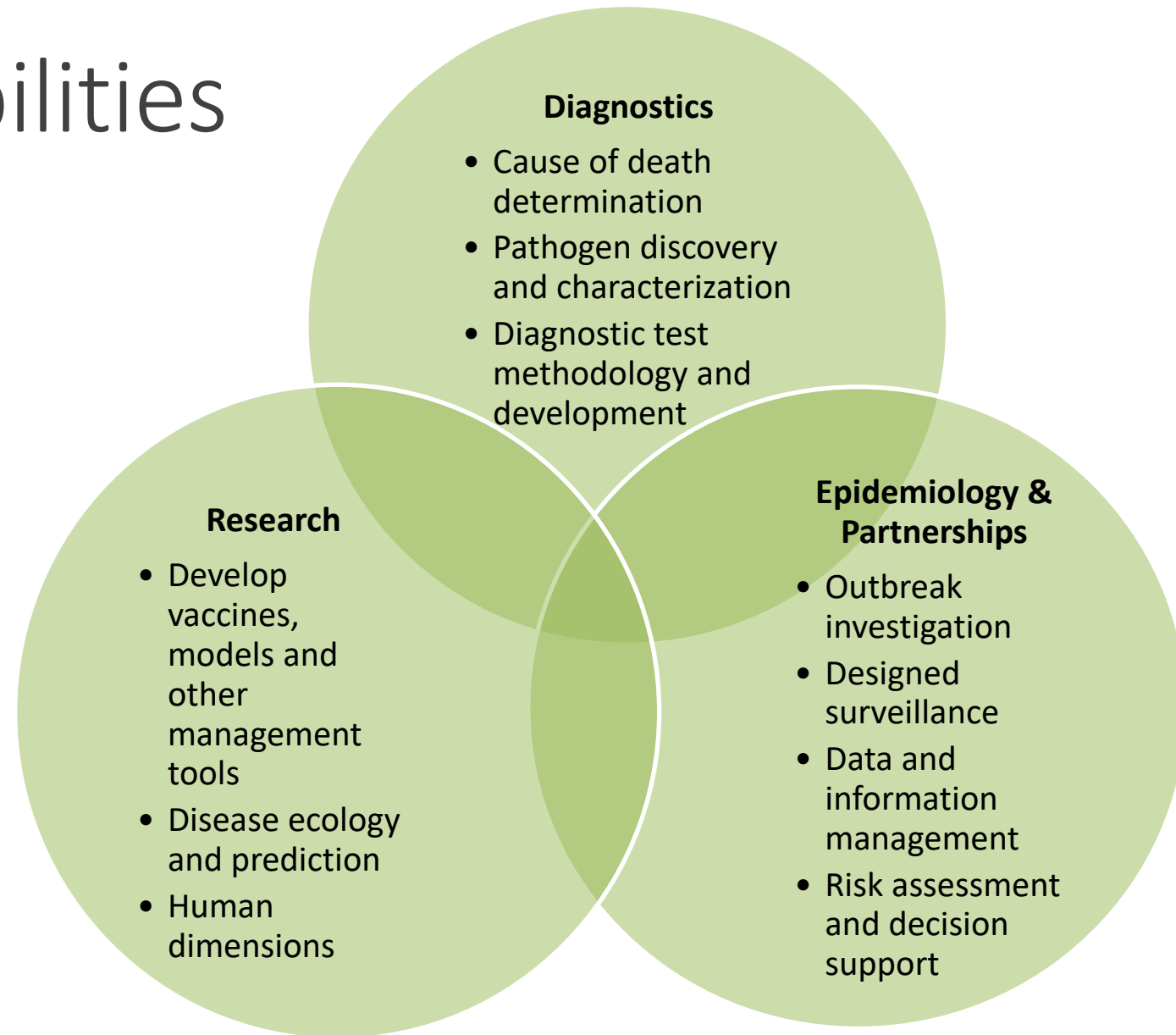
Main Building

NWHC Facilities, 1988

Emerging Diseases Investigated by NWHC



NWHC Capabilities

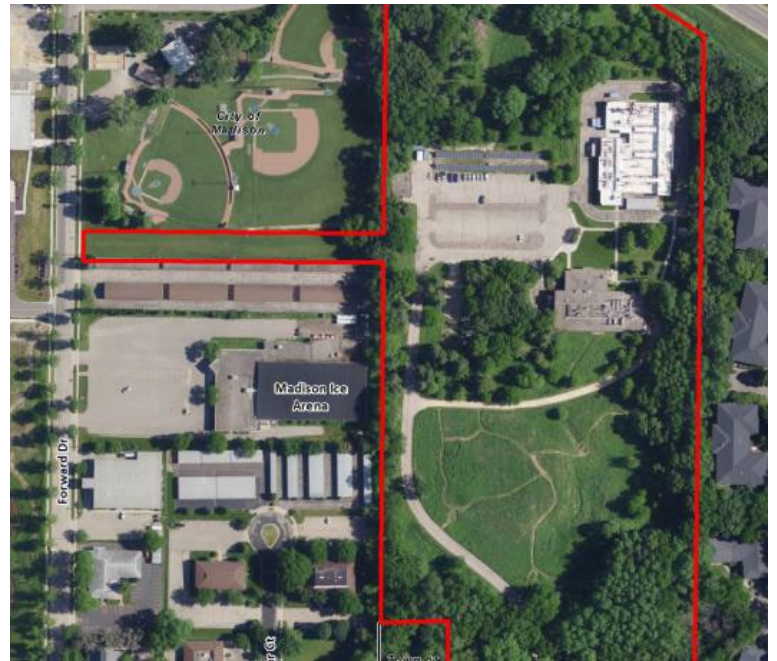




Flad Architects, 2023

National Wildlife Health Center

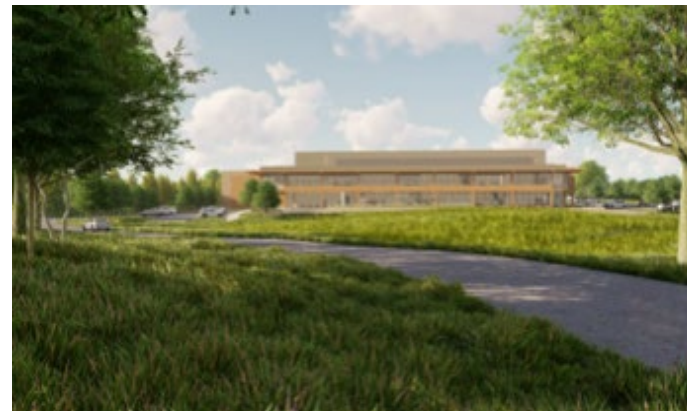
- ❑ Only national center devoted to advancing wildlife health science; designated a “mission essential” facility.
- ❑ Emergence of wildlife diseases has become high-priority concern in U.S. and the world.
- ❑ 6006 Schroeder Road in Madison.
- ❑ 24 acres of federal property.
- ❑ Main Building, TIB, ancillary facilities.
- ❑ Public access to prairie area.



Challenges Facing National Wildlife Health Center

- ❑ Since 2008, USGS has conducted multiple studies, each revealing NWHC to be outdated, inefficient, and need of significant repairs and renovations.
- ❑ Crowded laboratories and administrative areas, inefficient use of space, aging buildings, equipment and infrastructure, and increasing costs of operation and maintenance.
- ❑ Proactive efforts to repair systems and facilities to maintain operational status provided only modest, short-term relief.
- ❑ Renovations to meet contemporary requirements of mission critical and Biosafety Level 3 status impractical and cost prohibitive.
- ❑ NWHC age and space limitations affecting ability to perform its mission.

- ❑ USGS evaluated alternatives; conclusion was to develop new NWHC to current standards on grounds of present NWHC.
- ❑ New NWHC would provide efficient, safe, and secure facility to meet current and future needs.
- ❑ Meet NWHC's administrative, operational, health, and safety standards and requirements.



Concept Renderings – Proposed NWHC



Meeting Purpose

- ❑ Provide information regarding proposal to develop new NWHC in Madison.
- ❑ Solicit comments and input concerning the proposal prior to preparation of Draft Environmental Impact Statement (EIS).
- ❑ Ensure compliance with National Environmental Policy Act (NEPA) and other laws, regulations, and Executive Orders.
- ❑ Establish a dialogue between USGS and tribal representatives regarding proposed NWHC.



Goals and Objectives

- ❑ Provide spaces needed to research wildlife disease detection, control, and prevention and other programs that support NWHC mission.
- ❑ Incorporate latest technologies and best practices to ensure health, safety, and well-being of staff, visitors, and public.
- ❑ Utilize modern lab equipment, mechanical systems, and Best Practices to reduce exposure to pathogens and risks to staff.
- ❑ Make effective use of staff with design that minimizes internal movements.

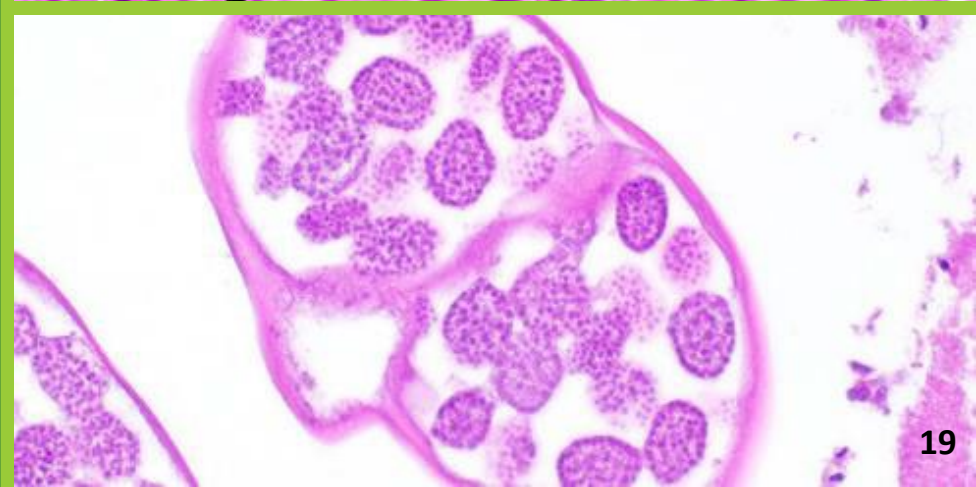
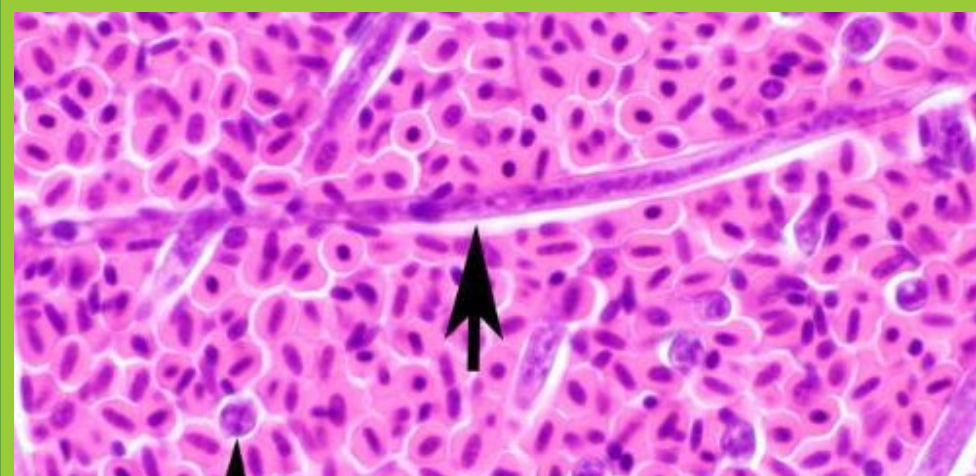
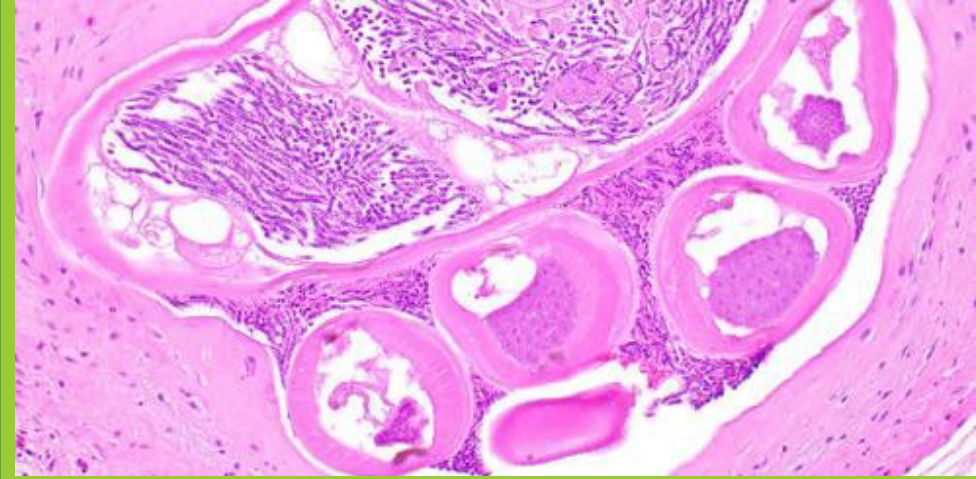


Goals and Objectives

- ❑ Apply innovative design, quality construction, highly efficient air handling, mechanical, electrical, and plumbing systems, to achieve and maintain peak performance standards.
- ❑ Use advanced building design and construction materials that are sustainable and resilient against hazards associated with climate change and other outside forces.
- ❑ Elevate quality of work environment.

Project Description

- ❑ New NWHC envisioned as low-rise structure (three stories and basement) with administrative offices, BSL2 and BSL3 laboratories, vivarium, support spaces, etc.
- ❑ Modern laboratory containment systems to prevent staff exposure, escape of harmful pathogens, cross-contamination, etc.
- ❑ Maintain NWHC operation during construction; no changes to utilities and roadway infrastructure.
- ❑ Expand use of photovoltaic systems and possible installation of geothermal field to provide a portion of center's energy requirements.
- ❑ New parking areas, walkways, energy-efficient lighting, directional and other signage, etc.
- ❑ Maintain/restore prairie area for continued public access and use.





Environmental Impact Statement

- ❑ Purpose of report and regulations under which EIS is conducted.
- ❑ Background, history, and mission of NWHC.
- ❑ Purpose and need for new NWHC.
- ❑ Alternatives considered including No Action alternative.
- ❑ Affected environment.
- ❑ Potential impacts and mitigation measures.
- ❑ Cumulative impacts, resource commitments.
- ❑ References, preparers.



EIS Subject Areas

Topography, Geology and Soils

Water Resources

Biological Resources

Historic, Archaeological, Cultural Resources

Hazardous and Biohazardous Materials

Visual and Aesthetic Resources

Socioeconomics



EIS Subject Areas (cont.)

Environmental Justice

Land Use

Community Services

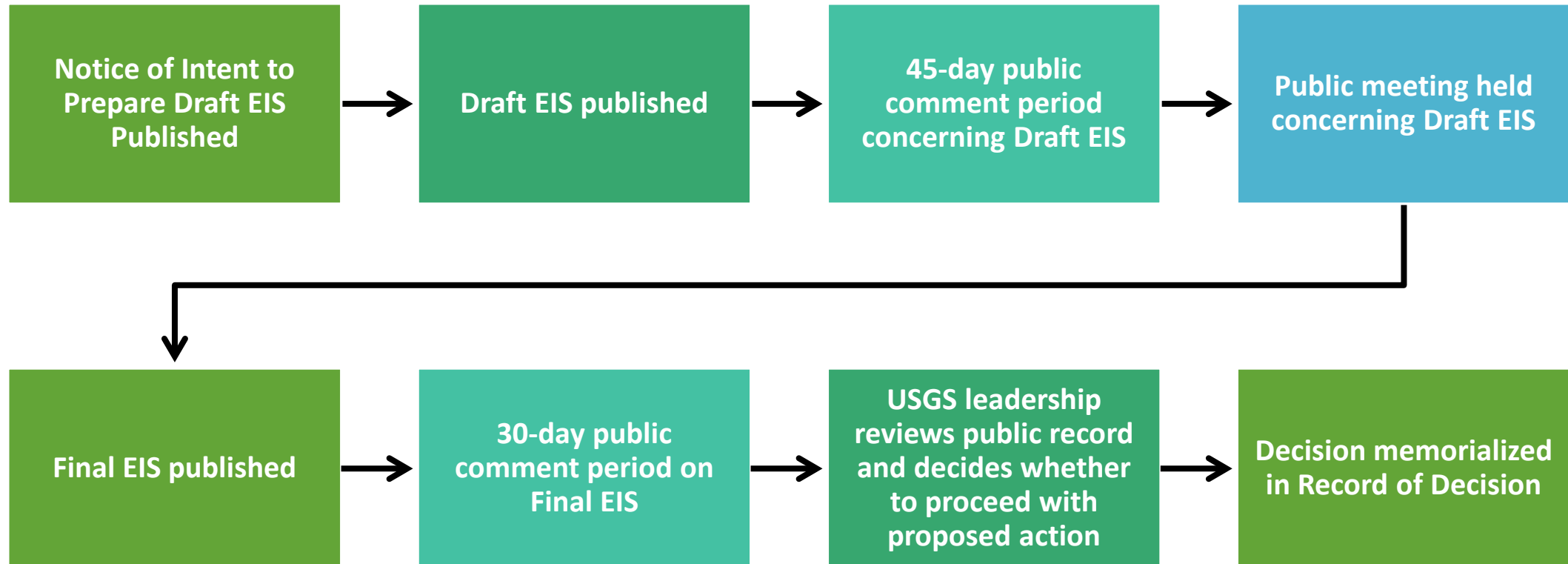
Utilities

Transportation

Air Quality

Noise

Review and Decision Process





Project Status



Notice of Intent to Prepare Draft EIS



Agency Outreach



Tribal Outreach



Public Outreach

NWHC Project Website: <https://nwhceis.com/>

- ❑ Facilitate communications about NWHC project and EIS.
- ❑ Central location for project-related information.
- ❑ Access to meeting notices, announcements, documents, recordings, etc.
- ❑ Means to submit comments, questions, join email list, receive announcements, EIS, etc.





Next Steps/Open Discussion

Thank You



- ❑ Jordan Sizemore, REM
Environmental Protection Specialist
jsizemore@usgs.gov
- ❑ Mark Gaikowski, Acting Director
- ❑ Joshua Valder, Tribal Liaison

<https://nwhceis.com/>